



Innovative

NY Thermal Inc. is an industry leader providing the ultimate in features and efficiency. Our 40-year-old family business is committed to continuous product improvement. When you buy NTI, you buy the best.



Efficient

Save the planet: The **Tx** can reduce greenhouse gas (GHG) emissions by up to 50%, and lead to a reduction of 2.5 tons of GHGs, equivalent to two acres of, or 280, trees.

Save money: Savings of up to 40% on heating bills due to superior efficiency. If you pay \$1,800 annually, you could save \$720 a year, or \$3,600 in five years.



Dependable

At NTI, we manufacture all of our boilers to the highest industry standards. Our in-factory Quality Control tests are the most rigorous in the industry. Every **Tx** boiler is factory run and calibrated for optimal performance. Our limited warranty provides you with the assurance of years of worry-free operation and our Technical Support is second-to-none in the industry.

MODEL	CSA INPUT (MBH)		DOE Heating Cap. (MBH)	Net I=B=R Rating (MBH)	AFUE %
	Min.	Max.			
Tx51	9.2	46	42	37	94
Tx81	16.4	82	75	66	94
Tx101	20.2	101	93	81	94
Tx132/151	30.2	137	126	110	94
		151	139	121	93
Tx132/151C	30.2	137	126	110	94
		151	139	121	93

Specifications	
Maximum vent length 2"/3"	100/150
Height	31.25"
Width	18"
Depth	16"

Combi Specifications	
Tx151 DHW Output at 50°F Inlet Water (GPM @ Water °F)	5.4 @ 100°F
	4.5 @ 110°F
	3.9 @ 120°F
	3.4 @ 130°F

TRINITY_{Tx}

The Evolution of High Efficiency Condensing Boilers

- High efficiency stainless steel boiler
- Models from 46,000 to 151,000 BTU/Hr
- Available in a combi version
- Fully modulating with 5:1 turndown
- Advanced outdoor reset control
- Low NOx operation
- Venting to 150'
- 2" venting on all models up to 100'



NY THERMAL INC.
 30 Stonegate Drive, Saint John
 New Brunswick E2H 0A4 Canada
 Tel: 506-657-6000
 Toll-free: 800-688-2575
 Fax: 506-432-1135

www.nythermal.com

Printed in Canada – 02/13



DISTRIBUTED BY:



nythermal.com

As NTI continuously strives to improve our products, we reserve the right to make changes without prior notification. Energy Star listing pending completion of documentation at time of printing.

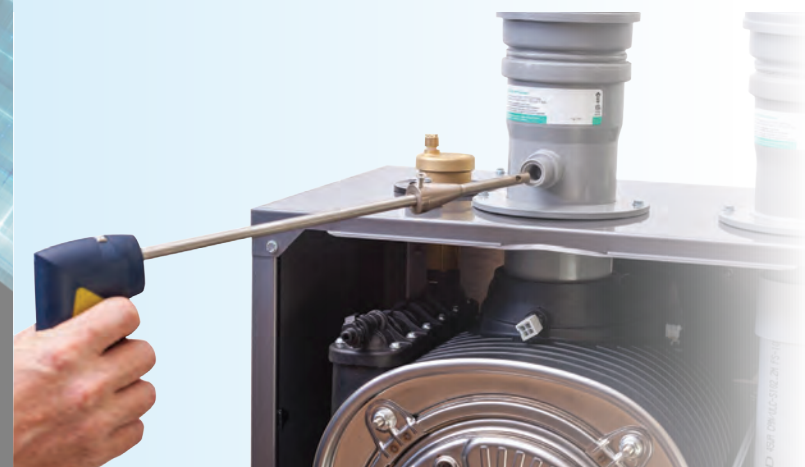
Standard Features

- Built and certified as a heating boiler
- Pre-wired for use with indirect water heater
- High efficiency stainless steel boiler
- All components are quick release type
- Advanced integrated control with:
 - Full automatic modulation
 - Outdoor reset
 - Lead-Lag capable
 - Low pressure cutoff
 - Easy programmable display
 - OD reset boost feature
 - Warm weather shutdown (WWSD)
 - Compatible with indirect tank sensor
 - Diagnostic logging
- Easy wire connection strip
- Fully packaged and wired assembly
- Propane conversion kit
- Auto air vent
- No-glue universal vent connections (accepts PPs and PVC)
- Three pump outputs
- Exhaust vent test port
- 120V power receptacle
- Certified ANSI Z21.13



Innovative Design

The engineering elegance of the Tx is unmatched. The control panel is hinged to provide easy access to the field wiring connectors, and internal components.



Engineering Elegance

The Tx has been engineered to make installation, setup and service easy. Service ports, test receptacles, easy access, and quick release components make the Tx unmatched in the industry.



Combi Application

The Tx132/Tx151 is available in a combi version, whereby the boiler can provide both space heating and domestic hot water. The boiler gives full capacity in heating and DHW modes.

Features

- Low loss header manifold (primary loop)
- Internal primary circulator
- Boiler gives full capacity in heating and DHW mode
- All components are quick connecting for servicing
- Fully integrated plumbing
- DHW heat exchanger
- DHW flow sensor
- DHW temperature sensor
- Flow diverter valve
- Advanced operating control, including:
 - DHW priority
 - DHW preheating
 - Modulation to DHW temperature
 - Electronic tempering

Efficient Performance

Features a patented Ferritic SS ASME heat exchanger. The state-of-the-art NIT burner provides the optimum ignition, and turn down modulation.

Boiler Features

- Easy to install and maintain
- High efficiency stainless steel boiler
- All water connections are located on the bottom
- Fully modulating combustion system
- Condensate pump receptacle
- Wall mount configuration with available floor stand
- No-glue universal vent connections (accepts PPs and PVC)
- On-off power service switch
- High quality appliance metallic clear coat finish
- ASME certified boiler
- Certified ANSI Z21.13

Controller Features

- Ultimate controllability with the advanced Tx controller
- Outdoor reset temperature operation
- Our Lead-Lag cascade system maximizes efficient operation
- Detailed troubleshooting information (self diagnostic display)
- Increased boiler and system efficiency
- DHW & central heat modulation limiting
- Installer adjustable modulation ranges
- 4-20mA heat input for setpoint or modulation control*
- Freeze protection parameters
- Warm weather shutdown

** Note: 4-20mA (or 0-10V) burner control is only available with an additional control.*