



**DOUA**

**Ducane**<sup>®</sup>

THE DIFFERENCE IS QUALITY<sup>®</sup>

[www.ducanehvac.com](http://www.ducanehvac.com)

# Oil Furnace Upflow

## FEATURES

### HEAT EXCHANGER

- ◆ Heavy duty 14 gauge steel with a long lasting ceramic fiber combustion chamber
- ◆ Easy access large diameter clean out ports

### CABINET

- ◆ Foil-faced high density fiberglass insulation reduces heat loss and noise
- ◆ Pre-painted for maximum durability
- ◆ External filter and filter rack included

### BLOWER

- ◆ Slide-out design with quick plug-in wiring
- ◆ Dynamically balanced blower with resilient motor mounts for smooth and quiet operation

### BURNER

- ◆ High quality Beckett Flame Retention burner for efficient combustion
- ◆ High efficiency air flow system to provide consistent operation through all operating conditions

### CONTROLS

- ◆ Readily available trade components
- ◆ Honeywell fan timer control
- ◆ 40 VA transformer
- ◆ Color coded wiring for easy service
- ◆ Prewired for air conditioning
- ◆ Heating blower on delay
- ◆ Four heating blower off settings
- ◆ Electronic air cleaner connection (115V)
- ◆ Humidifier connection (115V)
- ◆ 5 Amp fuse for protection
- ◆ Single wire twinning

### VENTING

- ◆ Includes standard barometric damper
- ◆ Optional sidewall vent kit

### INSTALLATION

- ◆ Factory wired

### ACCESSORIES

- ◆ Cleanout brush kit
- ◆ Side return air cabinet
- ◆ External filter kit for single side entry and over 1600 CFM

### WARRANTY

- ◆ Limited life-time on heat exchanger
- ◆ Five year limited on parts



## Model Number Guide

	D	O	U	A	57/72	F	3	A	
D - Product Family									Revision Level
O - Oil Unit									Ton Cooling Capacity
U - Upflow									F - Front Flue
Series									Nom. Output x 1000

## Physical & Electrical Data

Model	Nozzle Size	Input (Btuh)	Output (Btuh)	AFUE (ICS)	Nom. Cooling Capacity	Flue Dia. (in.)	Filter Size (in.)	Volts/ Hz/Phase	Max. Time Delay Breaker or Fuse (amp)	Trans. (V.A.)	Weight (lb.)
DOUA57/72F3A <sup>1</sup>	.50GPH-80°A	70,000	58,000	83	2.0 - 3.0	6	16 X 25	120/60/1	15	40	225
	.65GPH80°B	90,000	74,000	83							
DOUA84/95F4A <sup>1</sup>	.65GPH80°B	105,000	85,000	81	2.5 -4.0	6	16 X 25	120/60/1	15	40	225
	.75GPH80°B	119,000	97,000	81							
DOUA112/125F5A <sup>1</sup>	.85GPH-80°B	140,000	113,000	81	3.0 - 5.0	6	(2) 16 X 25 <sup>2</sup>	120/60/1	15	40	275
	1.00GPH-80°B	154,000	125,000	81							

Note: Units shipped with filter(s) for side return.

Note: All models are rated at 140 psi pump pressure except the DOUA57/72 which is rated at 100 psi

<sup>1</sup>Shipped in low fire configuration.

<sup>2</sup>Requires return air be brought to both sides above 1600 cfm.

## Blower Performance Data

Model	Motor Size (hp)	Blower Size	Temp. Rise (°F)	Blower Speed	CFM @ ext. static pressure in. W.C.				
					.20	.30	.40	.50	.60
DOUA57/72F3A	1/3	10 X 8	60	Hi	1,412	1,356	1,299	1,222	1,154
				Med Hi	1,260	1,217	1,172	1,120	1,060
				Med	1,040	1,025	991	960	910
				Low	887	878	850	830	787
DOUA84/95F4A	1/2	10 X 10	50 - 80	Hi	1,756	1,693	1,940	1,590	1,495
				Med Hi	1,445	1,425	1,400	1,335	1,287
				Med	1,191	1,181	1,147	1,110	1,054
				Low	989	979	961	926	880
DOUA112/125F5A	3/4	12 x 11	60	Hi	2,204	2,140	2,058	2,000	1,900
				Med Hi	1,760	1,725	1,670	1,615	1,560
				Med	1,520	1,496	1,450	1,400	1,360
				Low	1,366	1,329	1,304	1,250	1,210

## Accessories

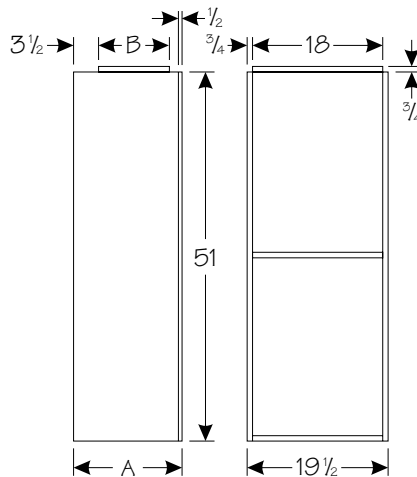
Description	Used with	Part Number
Twinning Kit	All models	20276602
Clean Out Kit	All models.	20327201
Tjerlund Side Wall Vent Kit <sup>1</sup>	All models.	20327701
Field Controls Side Wall Vent Kit <sup>2</sup>	All models.	20327702
External Filter Rack	All DOUA models.	20327301
Side Return Air Cabinet	DOUA57/72 & 84/95	20327401
Side Return Air Cabinet	DOUA112/125	20327402

<sup>1</sup> This can be ordered from Tjerlund, part number SSIC.

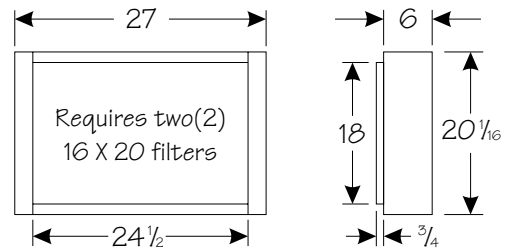
<sup>2</sup> This can be ordered from Field Controls, part number SWG-5-CK61.

## Side Return Air Cabinet

Model	A	B
20327401	15	10
20327402	21	16



## External Filter Rack



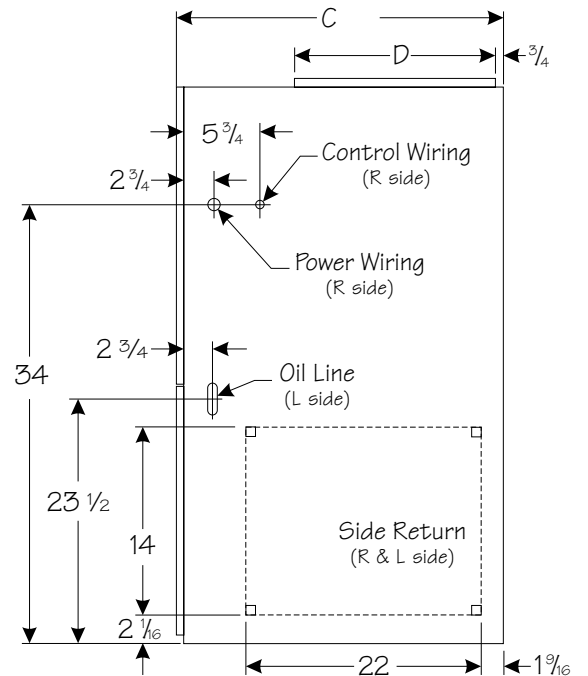
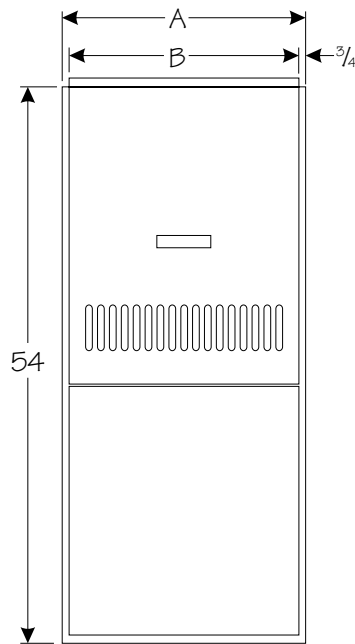
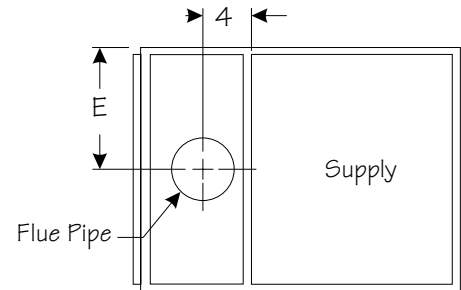
## Dimensions (in.)

Model	A	B	C	D	E
DOUA57/72F3A	19 1/2	18	30 5/8	19 5/8	9 3/4
DOUA84/95F4A					
DOUA112/125F5A	22 1/2	21	33 1/8	22 1/8	11 1/4

## Clearances (for combustibile material)

Model Number	Front*	Sides	Rear
DOUA57/72F3A	4	0	0
DOUA84/95F4A			
DOUA112/125F5A			

\*For service requirements normally 24".



Due to our policy of continuous improvement, all specifications are subject to change without notice. For more information, contact your local Ducane distributor.

**Ducane**<sup>®</sup>

THE DIFFERENCE IS QUALITY<sup>®</sup>

www.ducanehvac.com

AMERICAN  
**Ducane**  
MADE

Part #20591001 Replaces #20159351  
Form #DOUA-100 (05/02)  
Printed in U.S.A.

©2002

