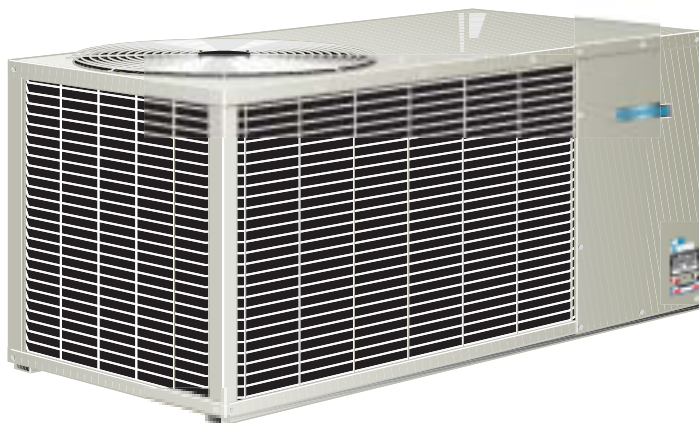


## P9&10 High Efficiency Series

Packaged Air Conditioners



### PERFORMANCE:

Efficiency Ratings from 9.7 to 10.2 SEER

Cooling Capacities from 2 to 5 Tons

Heating Capacities from 5 to 30 kW

Rated in Accordance with A.R.I.  
& D.O.E. Test Standards

### FEATURES:

Quiet Top Air Discharge

Unitized Galvanized Steel Construction

Long-Life Copper Tubes &  
Aluminum Fin Refrigerant Coils

Super Tough, Baked-On Polyester Finish

Rugged Heat Pump Compressor

Vinyl Coated Fan & Condenser Coil Guard  
with Hail Guard Protection

Control Box Located for Easy Access to  
Electrical Controls

Permanently Lubricated, 2 Speed PSC  
Blower Motors, Resilient-Mounted for Quiet,  
Vibration-Free Operation

Fan Guard Mount

Larger Wrap-Around Coil Surface

1½" Base Rails for Additional Bracing  
& Clearance

# P9&10 High Efficiency Series

MODEL SPECIFICATIONS								
MODEL		P924CF	P930CF	P938CF	P1040AC6	P1048ACS	P1060CS	P10603CS
GENERAL	CAPACITY ①	22,000	28,600	34,000	40,000	46,000	57,000	57,000
	SEER ①	9.7	9.7	9.8	10.0	10.20	10.20	10.20
	SENSIBLE TOTAL HEAT RATIO	.73	.71	.74	.71	.74	.69	.69
COMPRESSOR	COMPRESSOR TYPE	WELDED HERMETIC 208/230 VOLT				SCROLL		
	VOLTS-PHASE-HERTZ	230-1-60						230-3-60
CONDENSER COIL	TUBE O.D.	3/8	3/8	3/8	3/8	3/8	3/8	3/8
	PLATE FIN F.P.I.	12	16	18	22	22	22	22
	ROWS	1	1	1	1	1	1	1
FAN MOTOR	HP-FLA	1/5-1.5				1/4-2.2		
	RPM	1075				1075/900		
	CFM	3000				3380		
EVAPORATOR	TUBE O.D.	3/8	3/8	3/8	5/16	3/8	3/8	3/8
	PLATE FIN F.P.I.	12	12	10	12	10	10	10
	ROWS	2	2	3	4	3	3	3
BLOWER MOTOR	HP-FLA	1/4-2.2		1/3-2.5	3/4-4.0			
	RPM	1075/900		1075/900	1100/1000			
	CFM/ESP	825/.6	1050/.6	1275/.5	1400/.5	1700/.7	1835/.55	1835/.55
	CONDENSATE 3/4 I.D.	COPPER STUB						
ELECTRICAL	MAX FUSE SIZE ②	20	30	35	40	50	60	35
	MIN WIRE GAUGE ③	12	12	12	10	10	8	10
	SYSTEM LRA	62	83	87	104.5	131	180	135
	SYSTEM RUN AMPS ④	11.4	15.1	17.4	21.5	28.9	29.5	20
	MAX HEATER kW ⑤	20	20	20	20	30	30	30
SHIPPING WEIGHT (LBS)		237	244	255	270	326	348	351

## FOOTNOTES:

- ① Rated in accordance with ARI 210-89.
- ② Time delay type or HACR circuit breaker.
- ③ The wire sizes are for type TW copper conductors under 50 feet in length.  
If combination heating & cooling unit is required, adjustments may be needed. Refer to the optional heat chart for details.
- ④ Total system running amps @ 104° F OD temp, 80° F DB/67° F WB indoor temp.
- ⑤ Maximum kW of electric heat approved for each model.

## OPTIONAL ELECTRIC HEAT

MODEL	EA-5	EA-10	EA-15	EA-20	EA-11.25-3	EA-15-3	EA-22.5-3	EA-30-3
BTU OUTPUT @ 240 VOLTS	17,050	34,100	51,150	68,200	38,360	51,150	76,725	102,300
kW @ 240 VOLTS	5	10	15	20	11.25	15	22.5	30
MIN CFM*	600	825	825	825	825	825	1000	1450
VOLTS-PHASE-HERTZ	240-1-60				240-3-60			
HEAT LOAD AMPS	20.8	41.6	62.4	83.2	27.0	36	55	73
MIN WIRE GAUGE**	10	6	3	1	8	6	3	1
MAX FUSE SIZE	30	60	80	110	35	50	70	100
NET WT. (LBS)	12	15	18	20	16	16	20	30

\* Minimum air flow for safe operation.

\*\* Type TW copper conductor under 50 feet in length

## ELECTRICAL HEATER PRESSURE DROP (IN WC)\*\*\*

MODEL	EA-5	EA-10	EA-15	EA-20	EA-11.25-3	EA-15-3	EA-22.5-3	EA-30-3
LOSS @ 825 CFM	.08	.11	.17	.20	.17	.17	NA	NA
LOSS @ 1050 CFM	.11	.15	.20	.23	.20	.20	NA	NA
LOSS @ 1275 CFM	.14	.21	.24	.29	.24	.24	NA	NA
LOSS @ 1400 CFM	.19	.24	.32	.38	.32	.32	NA	NA
LOSS @ 1450 CFM	NA	.08	.11	.14	.11	.11	.11	.23
LOSS @ 1675 CFM	NA	.08	.13	.19	.13	.13	.13	.39
LOSS @ 1875 CFM	NA	.10	.14	.20	.14	.14	.14	.40

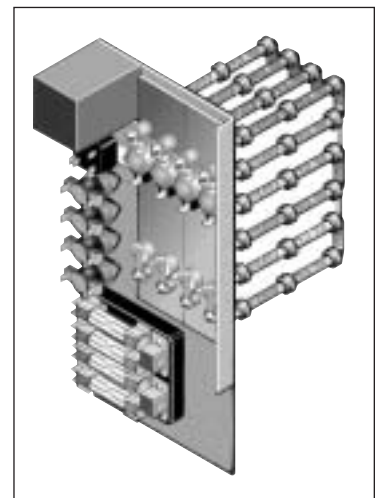
\*\*\* 825-1400 CFM refers to models in small cabinet. 1450-1875 CFM refers to models in large cabinet.

When heater is used, deduct pressure drop from available static pressure.

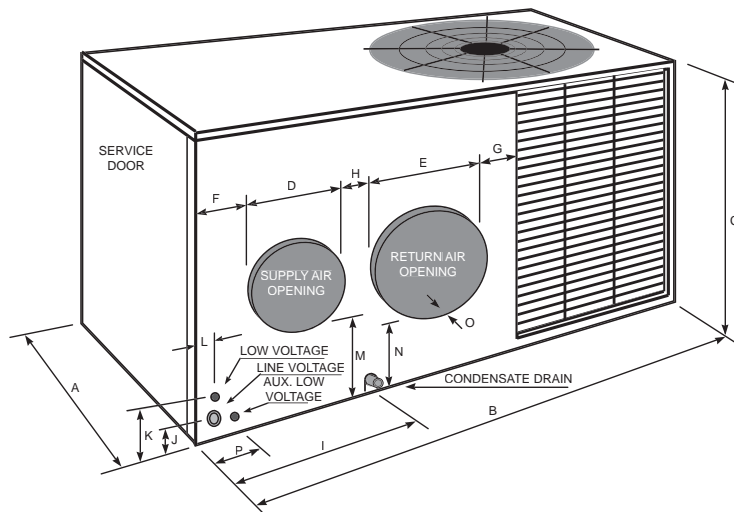
## AIRFLOW PERFORMANCE CHART

CFM/EXTERNAL DUCT STATIC (INCHES H <sub>2</sub> O)					HIGH SPEED/LOW SPEED			
MODEL	.2	.3	.4	.5	.6	.7	.8	.9
P924, P930	1240/NA	1210/1010	1160/940	1110/908	1065/855	930/785	830/720	720/685
P938	1435/1275	1400/1250	1340/1215	1275/1160	1205/1100	975/960	860/850	750/740
P1040	1700/1620	1630/1540	1565/1490	1500/1405	1400/1350	1320/1230	1190/1120	1050/985
P1048, P1060	2150/1940	2080/1910	2035/1835	1920/1755	1815/1705	1710/1585	1585/1435	1460/1350

Above performance is with dry coil. Deduct approximately .1" from available static pressure for wet coil performance.



DIMENSIONS (INCHES)			
	P924, P930, P938, P1040A	P1048A	P1060
A	25 1/4	34 1/4	34 1/4
B	48 1/4	58 1/4	58 1/4
C	25 3/4	25 3/4	27 3/4
D	10	12	12
E	12	14	14
F	3 1/4	2 1/8	2 1/8
G	2	2 1/4	2 1/4
H	2 1/2	4 3/4	4 3/4
I	14 1/2	17 1/2	17 1/2
J	2 1/8	2 1/8	2 1/8
K	4	4	4
L	1 7/8	1 7/8	1 7/8
M	8 1/2	6 1/4	6 1/4
N	6 1/4	4 1/8	4 1/8
O	1	1	1
P	3 3/4	3 3/4	3 3/4



Exceptionally Easy Service Access to all Electrical Components, including EA Series Heat Strips

Unit is Pre-Charged with Refrigerant and Pre-Wired for Cooling

Built-In Supply Dampers on all Models

Preformed Round Duct Collars Eliminate the Need for Special Adapter Collars

Slide-In Heat Assembly Makes Add-On Heat Applications Quick & Easy

High & Low Side Service Ports Conveniently Located on Front of Unit



Listed by  
Applied Research  
Laboratories



Rated in Accordance with ARI Standard 210.  
Certification Applies Only When Used with  
Proper Components as Listed with ARI.

Fedders Unitary Products  
505 Martinsville Rd.  
Liberty Corner, NJ 07938  
(908) 604-8686  
Form No. F-P910-0804

All product specifications reflect available information at the printing of this brochure.  
Fedders reserves the right to revise or modify products and/or specifications without notice.  
©2004 Fedders Unitary Products. Fedders is a registered trademark of Fedders North America.